



Suite 190
8,086 Sq. Ft.
ONE OVERLOOK POINT
 Lincolnshire Corporate Center

**Prominent Glass Entry with Potential
 for 9 Corner Offices Divisible**

Class A Office Space on a Pristine Lake with “City Amenities”

HIGHLIGHTS:

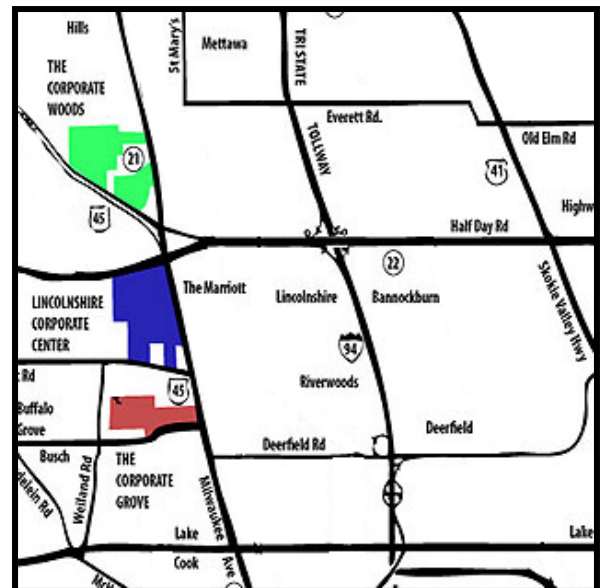
- Indoor Heated Parking for 50 Cars
- Floor Plan Yields Great Natural Light and 16 Corner Offices per Floor
- Walk to Public Transit Connections
- Newly Renovated Common Areas
- Walk to Cheesecake Factory, Lincolnshire Commons Restaurants and Shopping
- Easy Access to Lincolnshire Corporate Center Hotels, Restaurants and Marriott Resort
- Minutes to New Lifetime Fitness in The Corporate Woods
- Outdoor Amphitheater and Walking/Jogging Paths
- Dual Power Feed with Automatic Transfer Switch Insures a Consistent Power Supply
- Two Individual HVAC Units per Floor to Accommodate Efficient After Hours Operations
- In-Building Secure Tenant Storage Space Available
- Dedicated Freight Elevator and Loading Docks
- Responsive On-Site Management & Engineering
- Strong Debt-Free Ownership

TERMS:

Base Rent: \$16.50 Net Sq. Ft.
 Operating & Real Estate
 Tax Expenses: \$8.75 (2012 Est.)
 Escalation: \$.50 /Sq. Ft. /Year
 Possession: Immediate

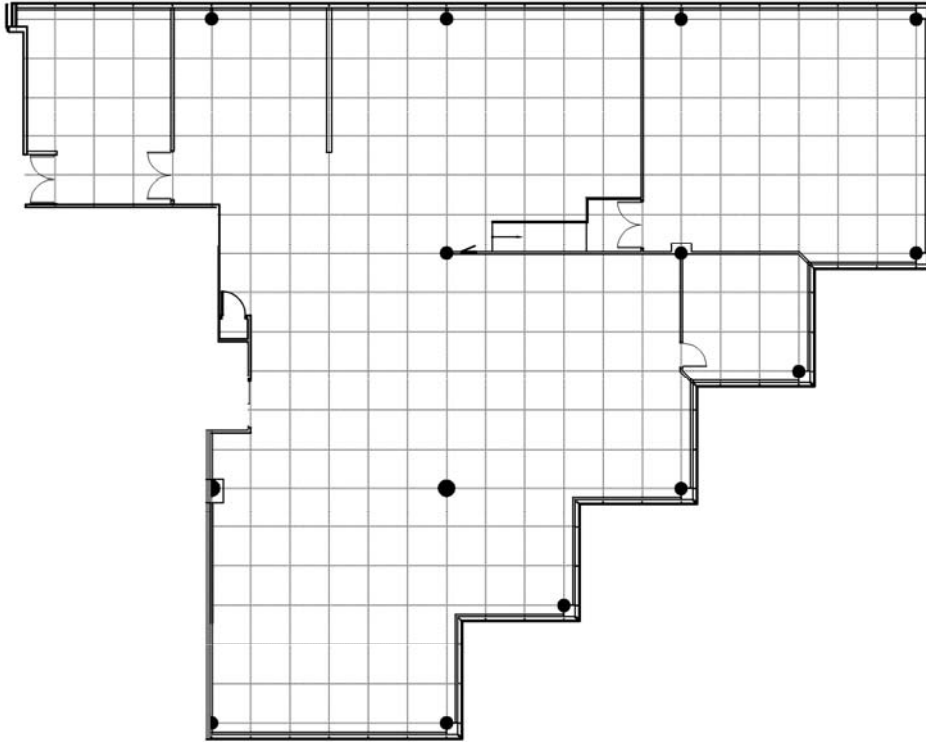
Exclusive Leasing and Management Agents

 **VAN VLISSINGEN AND CO.**
 One Overlook Point
 Lincolnshire Corporate Center
 Lincolnshire, Illinois 60069
847.634.2300

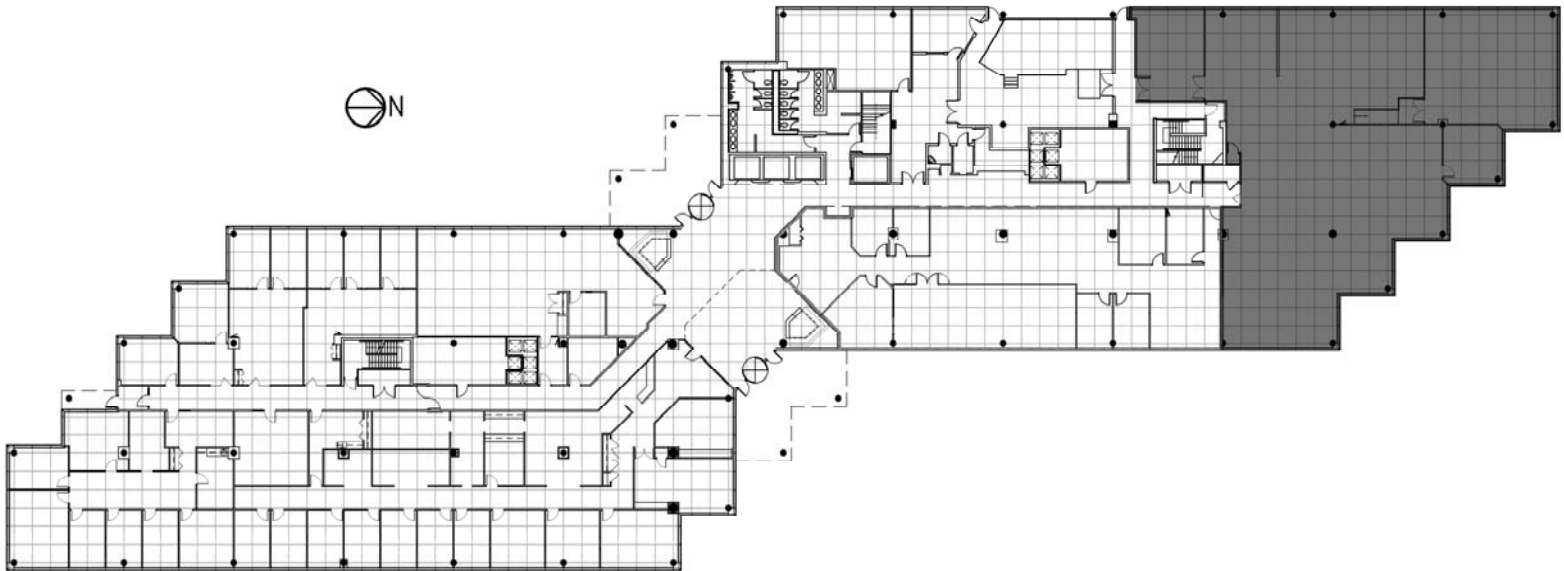


Chuck Lamphere, President
crl@vvco.com

Nick Panarese, Vice President
ndp@vvco.com



Suite 190
8,086 Sq. Ft.
ONE OVERLOOK POINT
Lincolnshire Corporate Center



Exclusive Leasing and Management Agents



VAN VLISSINGEN AND CO.

One Overlook Point
Lincolnshire Corporate Center
Lincolnshire, Illinois 60069

847.634.2300

Chuck Lamphere, President
crl@vvco.com

Nick Panarese, Vice President
ndp@vvco.com

Above information is subject to verification and no liability for errors or omissions is assumed. Price is subject to change and listing withdrawn without notice. Members of this firm have an ownership interest in this property. © Copyright 2011 All Rights Reserved