



**Suite 600**  
**36,688 Sq. Ft.**  
**ONE OVERLOOK POINT**  
 Lincolnshire Corporate Center

**Full Floor – Great Lake Views –  
 Potential for 16 Corner Offices  
 Can Be Combined for a Maximum  
 Contiguous of up to 169,948 sq. ft.**

## Class A Office Space on a Pristine Lake with “City Amenities”

### HIGHLIGHTS:

- Indoor Heated Parking for 50 Cars
- Floor Plan Yields Great Natural Light and 16 Corner Offices per Floor
- Walk to Public Transit Connections
- Newly Renovated Common Areas
- Walk to Cheesecake Factory, Lincolnshire Commons Restaurants and Shopping
- Easy Access to Lincolnshire Corporate Center Hotels, Restaurants and Marriott Resort
- Minutes to New Lifetime Fitness in The Corporate Woods
- Outdoor Amphitheater and Walking/Jogging Paths
- Dual Power Feed with Automatic Transfer Switch Insures a Consistent Power Supply
- Two Individual HVAC Units per Floor to Accommodate Efficient After Hours Operations
- In-Building Secure Tenant Storage Space Available
- Dedicated Freight Elevator and Loading Docks
- Responsive On-Site Management & Engineering
- Strong Debt-Free Ownership

### TERMS:

Base Rent: \$16.50 Net Sq. Ft.  
 Operating & Real Estate  
 Tax Expenses: \$8.75 (2012 Est.)  
 Escalation: \$.50 /Sq. Ft. /Year  
 Possession: Immediate

### Exclusive Leasing and Management Agents



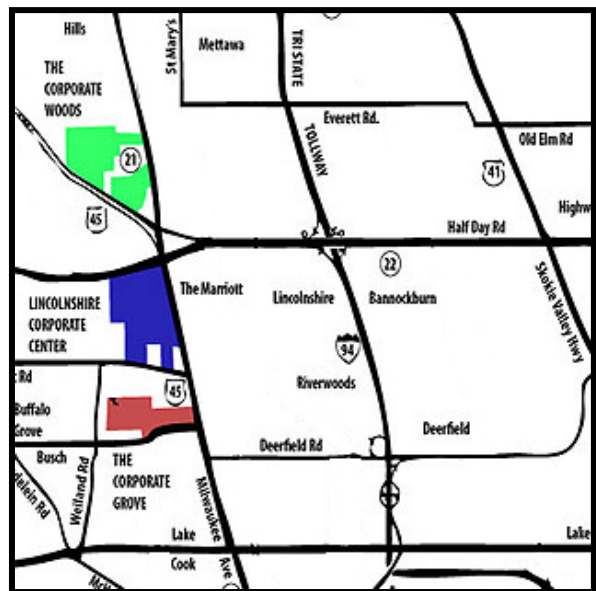
#### **VAN VLISSINGEN AND CO.**

One Overlook Point  
 Lincolnshire Corporate Center  
 Lincolnshire, Illinois 60069

**847.634.2300**

Chuck Lamphere, President  
[crl@vvco.com](mailto:crl@vvco.com)

Nick Panarese, Vice President  
[ndp@vvco.com](mailto:ndp@vvco.com)

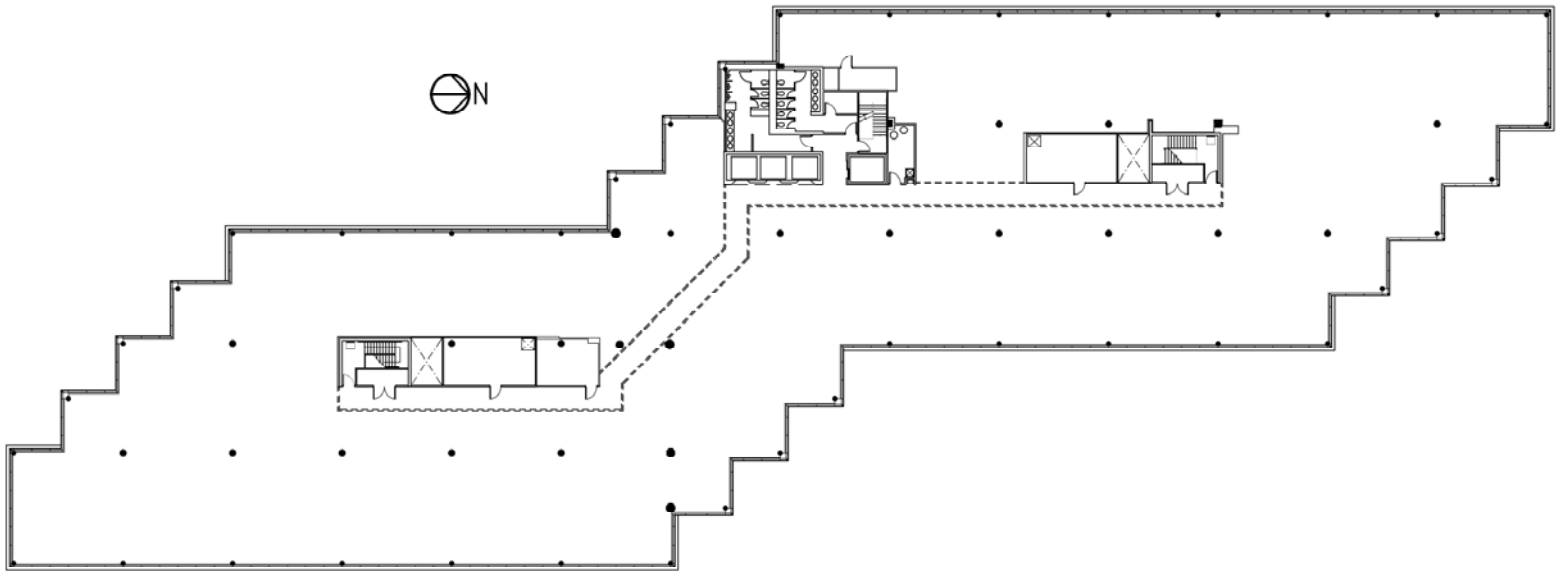


**Suite 600**

**36,688 Sq. Ft.**

**ONE OVERLOOK POINT**

Lincolnshire Corporate Center



**Exclusive Leasing and Management Agents**



**VAN VLISSINGEN AND CO.**

One Overlook Point  
Lincolnshire Corporate Center  
Lincolnshire, Illinois 60069

**847.634.2300**

**Chuck Lamphere, President**  
[crl@vvco.com](mailto:crl@vvco.com)

**Nick Panarese, Vice President**  
[ndp@vvco.com](mailto:ndp@vvco.com)

*Above information is subject to verification and no liability for errors or omissions is assumed. Price is subject to change and listing withdrawn without notice. Members of this firm have an ownership interest in this property. © Copyright 2011 All Rights Reserved*