



Suite 400

37,342 Sq. Ft.

333 KNIGHTSBRIDGE PARKWAY

Lincolnshire Corporate Center

Full Floor – Great Views –

Potential for 16 Corner Offices per Floor

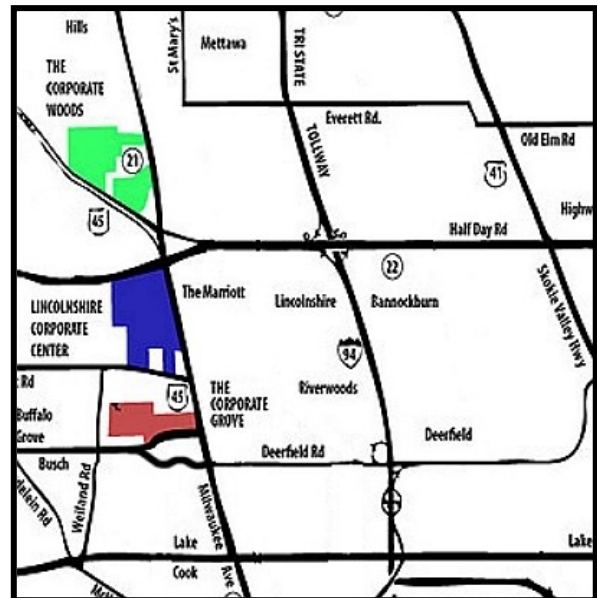
Divisible from 15,000 sq. ft. and Can be Combined for a Maximum Contiguous of 74,728 sq. ft.

HIGHLIGHTS:

- Prominent location at the Northwest Corner of Milwaukee Ave and Knightsbridge Parkway
- Two-story atrium lobby with newly renovated common areas
- Two individual HVAC units per floor to accommodate efficient after hours operations
- Dedicated freight elevator and loading docks
- Miles of walking/jogging paths
- Directly adjacent to Marriott Spring Hill Suites and Walker Brothers
- Easy access via walking paths to other Lincolnshire Corporate Center hotels, restaurants and daycare center
- Enjoy Cheesecake Factory, Lincolnshire Commons restaurants and shopping
- Directly across Milwaukee Avenue from Marriott Lincolnshire Resort
- Minutes to new Lifetime Fitness in The Corporate Woods
- Walk to public transit connections

TERMS:

Base Rent: Negotiable
 Operating & Real Estate
 Tax Expenses: \$10.05 (2024 Est.)
 Escalation: \$.50 /Sq. Ft. /Year
 Possession: Immediate



Exclusive Leasing and Management Agents



VAN VLISSINGEN AND CO.

One Overlook Point
 Lincolnshire Corporate Center
 Lincolnshire, Illinois 60069

847.634.2300

Chuck Lamphere, President
crl@vvco.com

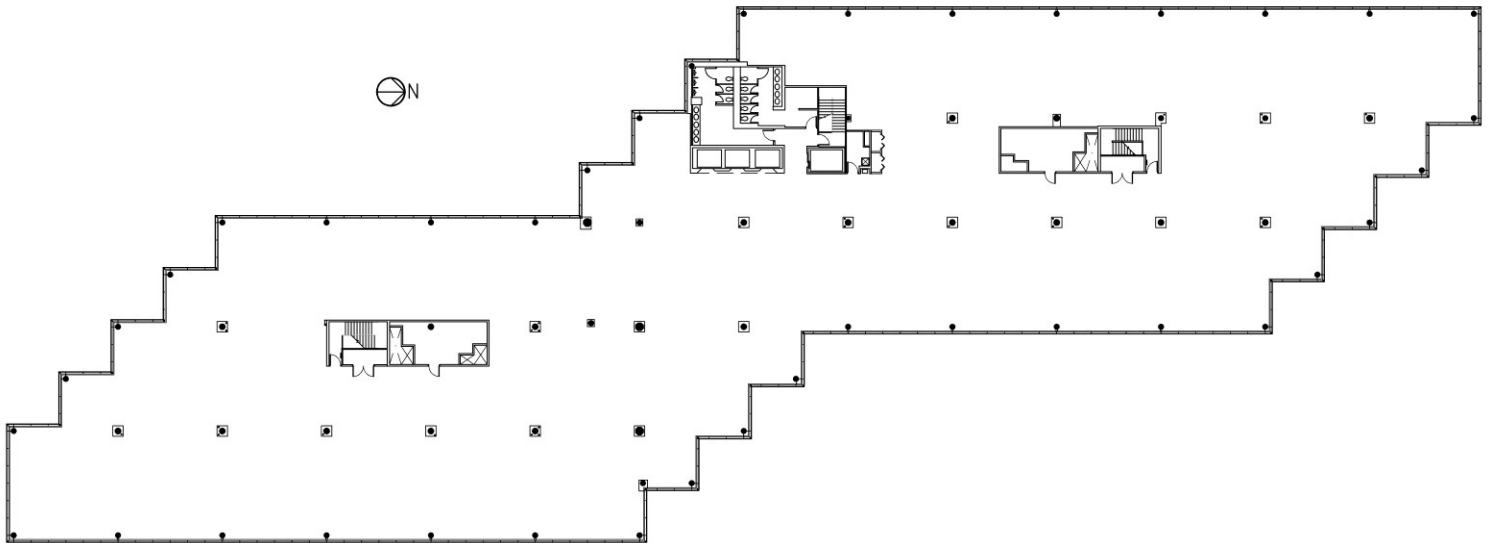
Nick Panarese, Executive VP, SIOR
ndp@vvco.com

Suite 400

37,342 Sq. Ft.

333 KNIGHTSBRIDGE PARKWAY

Lincolnshire Corporate Center



Exclusive Leasing and Management Agents



VAN VLISSINGEN AND CO.

One Overlook Point
Lincolnshire Corporate Center
Lincolnshire, Illinois 60069

847.634.2300

Chuck Lamphere, President
crl@vvco.com

Nick Panarese, Executive VP, SIOR
ndp@vvco.com

Above information is subject to verification and no liability for errors or omissions is assumed. Price is subject to change and listing withdrawn without notice. Members of this firm have an ownership interest in this property. © Copyright 2024 All Rights Reserved