



## 750 CORPORATE WOODS PARKWAY

The Corporate Woods  
Vernon Hills, Illinois

Total Unit: 26,244 Sq. Ft.  
Office: 2,858 Sq. Ft.  
Bays: 42' x 44'

### TERMS:

Base Rent: \$8.95 Net  
Escalation: 4% Per Year  
Real Estate Taxes: \$1.81 (2024 Est.)  
CAM & Insurance: \$0.84 (2024 Est.)

### HIGHLIGHTS:

- Lower Lake County Taxes
- Quality Finishes Throughout
- Offices to Suit

### BUILDING DATA:

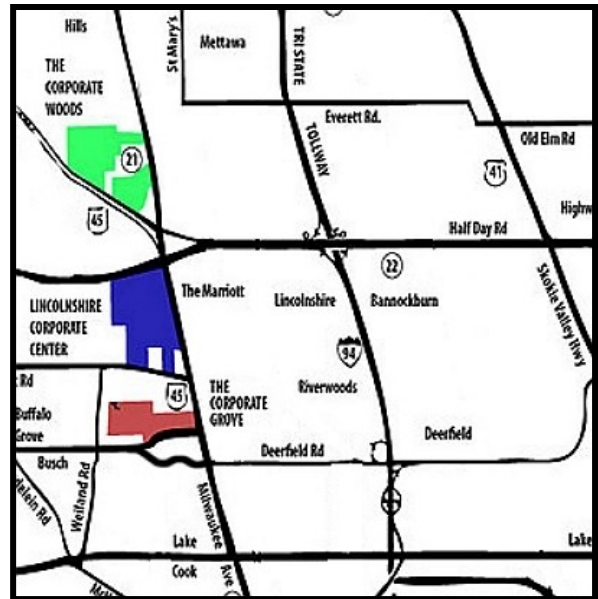
Ceiling Height: 24'  
Sprinkler System: ESFR System  
Power: 400 Amps

### SHIPPING:

Truck Docks: 4 (Exterior)  
Drive in Doors: 1

### POSSESSION:

7/01/2025



### Exclusive Leasing and Management Agents



## VAN VLISSINGEN AND CO.

One Overlook Point  
Lincolnshire Corporate Center  
Lincolnshire, Illinois 60069

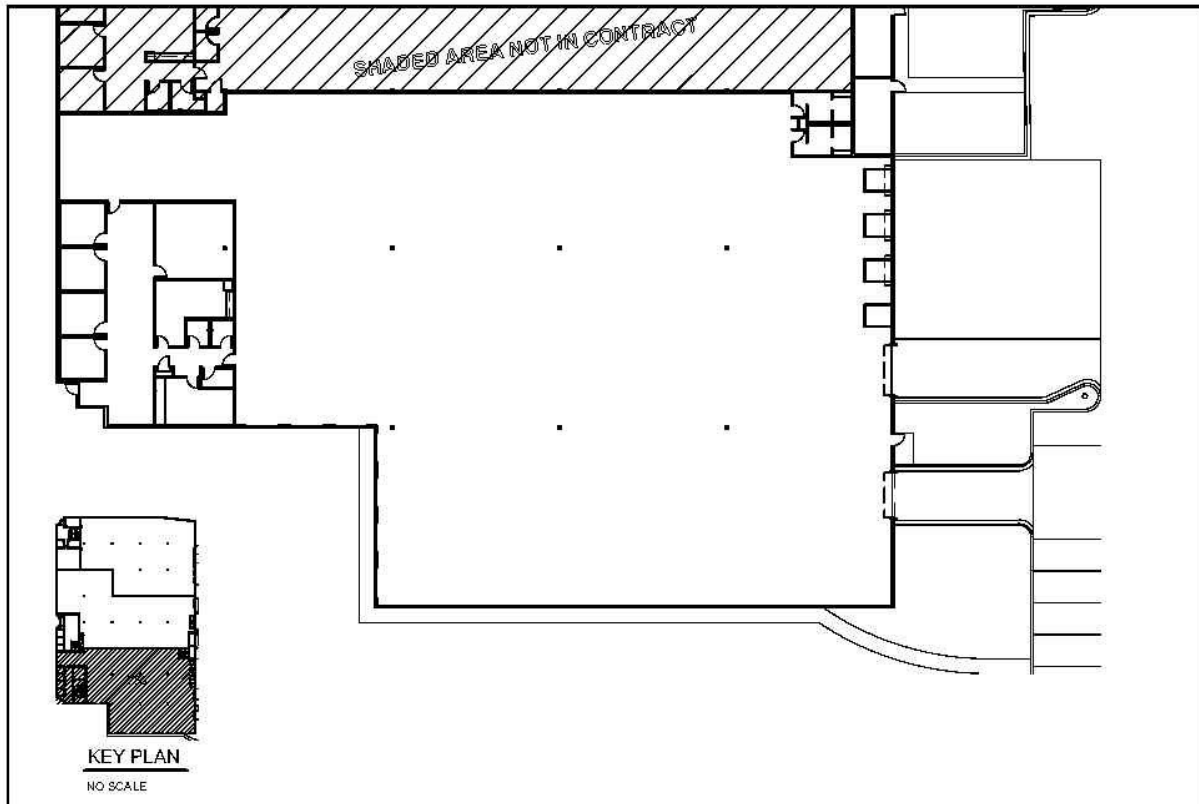
**847.634.2300**

Chuck Lamphere, President  
[crl@vvco.com](mailto:crl@vvco.com)

Nick Panarese, Executive VP, SIOR  
[ndp@vvco.com](mailto:ndp@vvco.com)

# 750 CORPORATE WOODS PARKWAY

The Corporate Woods  
Vernon Hills, Illinois



Exclusive Leasing and Management Agents

 **VAN VLISSINGEN AND CO.**

One Overlook Point  
Lincolnshire Corporate Center  
Lincolnshire, Illinois 60069

**847.634.2300**

Chuck Lamphere, President  
[crl@vvco.com](mailto:crl@vvco.com)

Nick Panarese, Executive VP, SIOR  
[ndp@vvco.com](mailto:ndp@vvco.com)

*Above information is subject to verification and no liability for errors or omissions is assumed. Price is subject to change and listing withdrawn without notice. Members of this firm have an ownership interest in this property. © Copyright 2024 All Rights Reserved*