



SUITE 260
2,288 Sq. Ft.
ONE OVERLOOK POINT
Lincolnshire Corporate Center

Class A Office Space on a Pristine Lake with “City Amenities”

HIGHLIGHTS:

- Overlook Point Deli
- Wi-Fi Lounge / Game Room
- Lakeside Patio and Fire Pit
- Fitness Center
- Conference Center
- Outdoor Amphitheater and Miles of Walking / Jogging Paths
- Bike Room with Tools and Storage
- Indoor Heated Executive Parking for 50 Cars
- Walk to Public Transit Connections
- Walk to Cheesecake Factory, Lincolnshire Commons Restaurants and Shopping
- Easy Access to Lincolnshire Corporate Center Hotels, Restaurants and Marriott Resort
- Floor Plan Yields Great Natural Life and 16 Corner Offices per Floor
- Dual Power Feed with Automatic Transfer Switch Insures a Consistent Power Supply
- Two Individual HVAC Units per Floor to Accommodate Cost Efficient After Hours Operations
- In-Building Secure Tenant Storage Space Available
- Dedicated Freight Elevator and Loading Docks
- Responsive On-Site Ownership and Management

TERMS:

Base Rent:	Negotiable
Operating & Real Estate	
Tax Expenses:	\$9.97 (2024 Est.)
Escalation:	\$.50 /Sq. Ft. /Year
Possession:	Immediate

Exclusive Leasing and Management Agents

 **VAN VLISSINGEN AND CO.**
One Overlook Point
Lincolnshire Corporate Center
Lincolnshire, Illinois 60069
847.634.2300

Chuck Lamphere, President
crl@vvco.com

Nick Panarese, Executive VP, SIOR
ndp@vvco.com

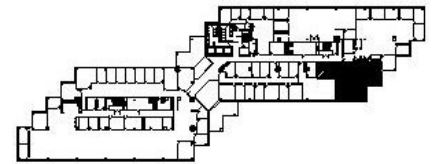
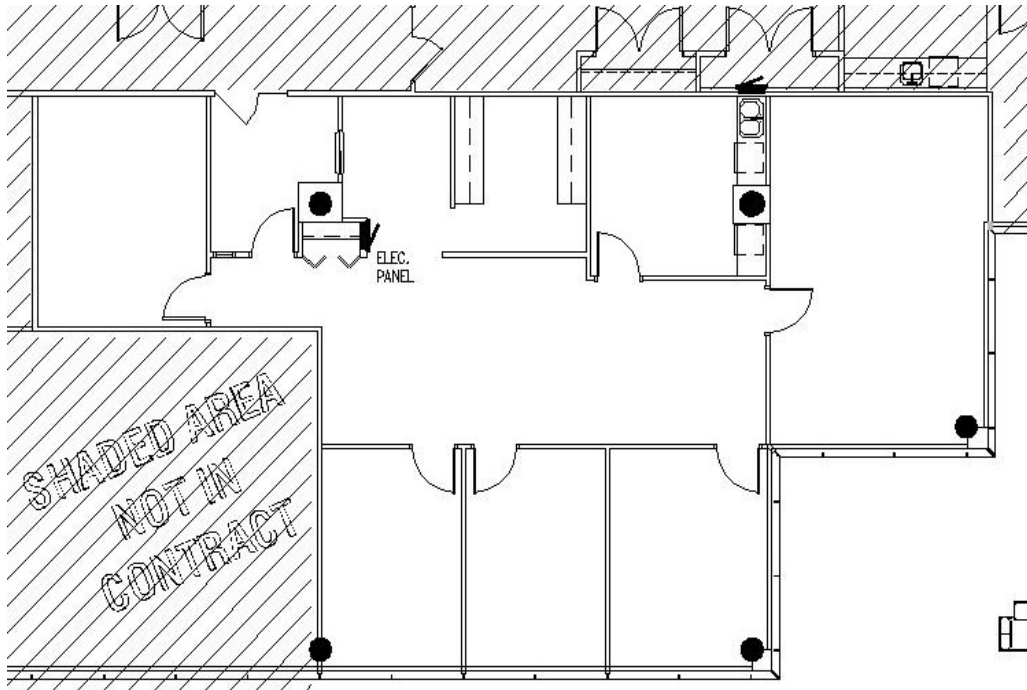


SUITE 260

2,288 Sq. Ft.

ONE OVERLOOK POINT

Lincolnshire Corporate Center



KEY PLAN

Exclusive Leasing and Management Agents



VAN VLISSINGEN AND CO.

One Overlook Point
Lincolnshire Corporate Center
Lincolnshire, Illinois 60069

847.634.2300

Chuck Lamphere, President
crl@vvco.com

Nick Panarese, Executive VP, SIOR
ndp@vvco.com

Above information is subject to verification and no liability for errors or omissions is assumed. Price is subject to change and listing withdrawn without notice. Members of this firm have an ownership interest in this property. © Copyright 2024 All Rights Reserved